

# Technical Bulletin

Technical Helpline: +44(0)1622 833004 Fax: +44(0)1622 834004

## Product Information: ADH25501 Locking Pin Screw

Applications: Multiple Honda models

Date Issued: 03/2011

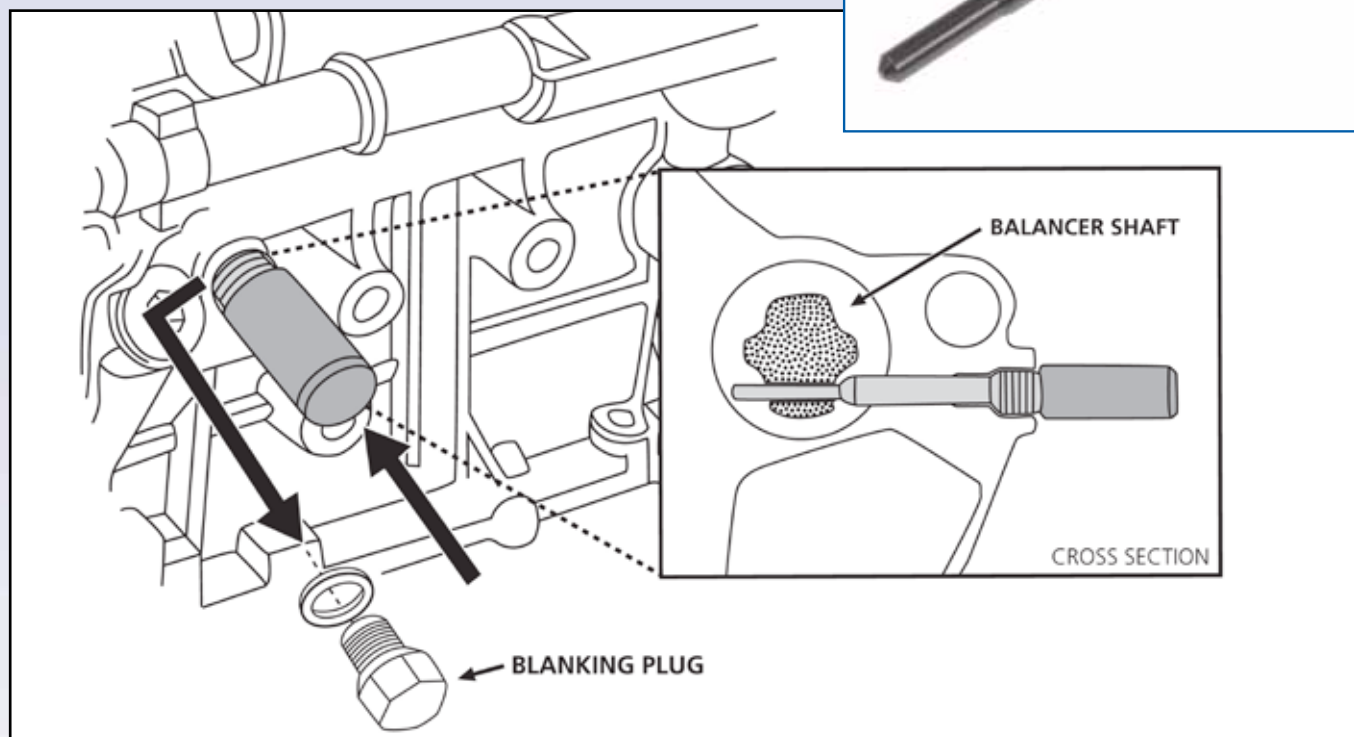
BLUE  
PRINT

Solutions

Blue Print's 'Locking Pin Screw' ADH25501 is required to allow correct alignment of the balancer shaft when replacing the timing and balancer shaft belts on many Honda models.

The balancer shaft is driven by the crankshaft via a toothed belt that needs to be removed when replacing the timing belt, and is usually replaced at the same time

ADH25501



- Access for the balancer shaft locking pin screw is via a blanking plug shown above.
- Remove the plug and insert the locking pin while carefully rotating the crankshaft until the pin and shaft are correctly aligned.
- Due to the offset nature of the slot in the balancer shaft, it is not possible to fit the pin 180 degrees out.

**Failure to use the correct tools and adhere to the correct instructions could result in severe engine damage.**

**We recommend that you do not attempt timing belt replacement unless you have the full manufacturer's instructions for performing the maintenance/repair.**

**Disclaimer :** Any technical tips are produced in good faith. Blue Print, always recommend that vehicle maintenance and diagnostics are only carried out by suitably experienced people using appropriate tools in a safe manner within a workshop environment. Blue Print, and their customers cannot be held responsible for the correctness of, or misinterpretation of the above technical tips. Images shown are for illustrative purposes only and may not be representative of the products or vehicles described.



[www.blue-print.com](http://www.blue-print.com)